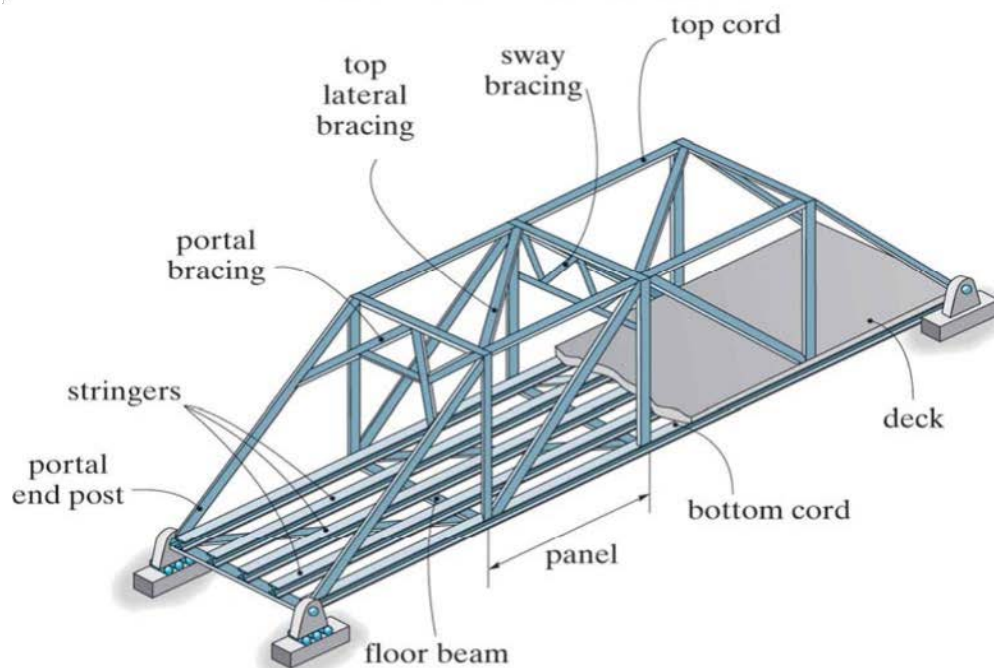


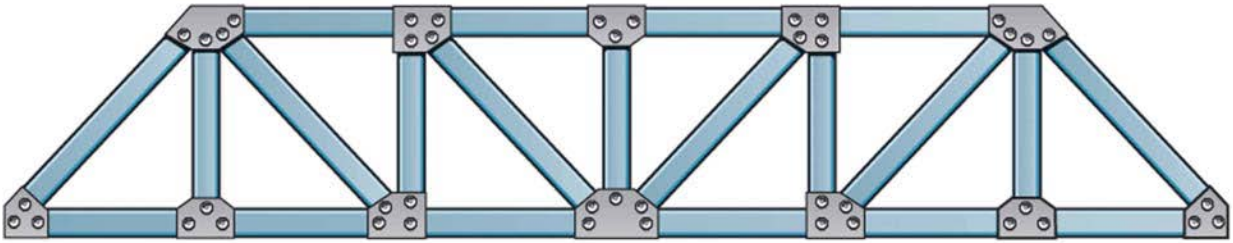
*RooBuilders Balsa Bridge Contest*



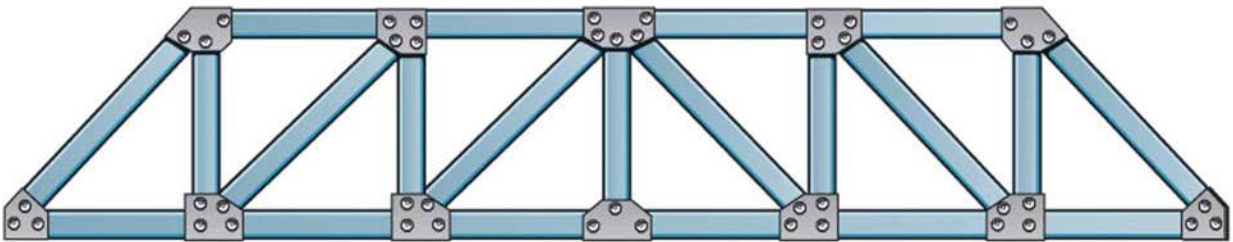
*A bridge must be structurally safe and stable, and esthetically pleasing*



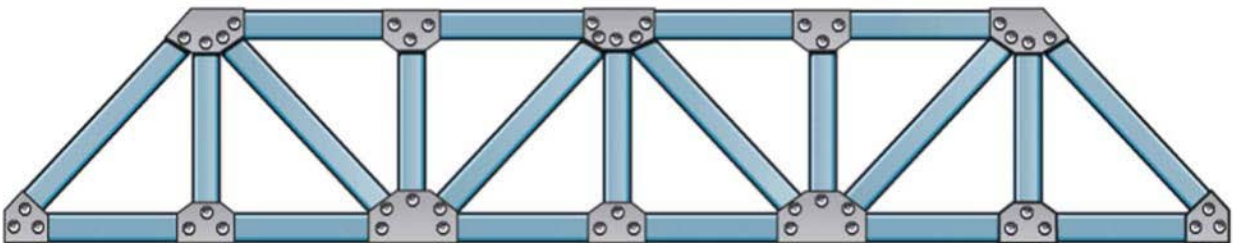
*Bridge Truss Components*



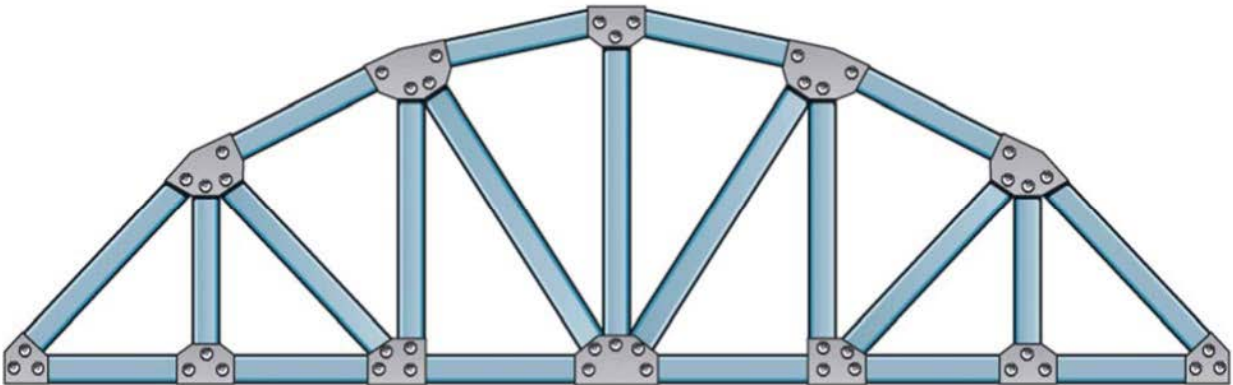
Pratt



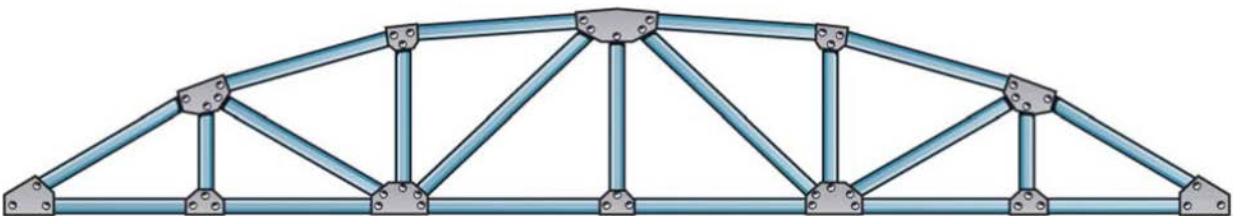
Howe



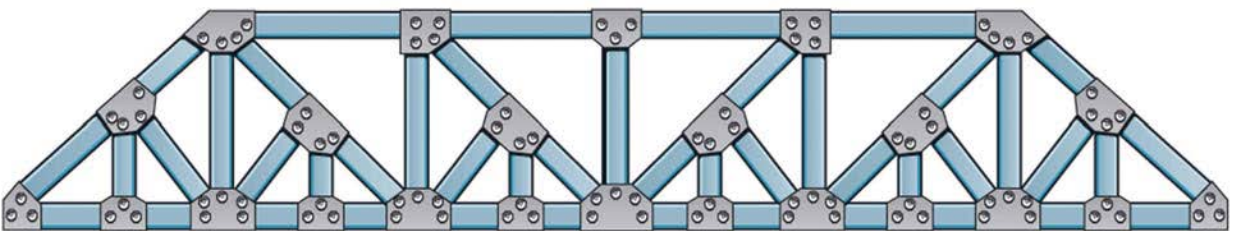
Warren (with verticals)



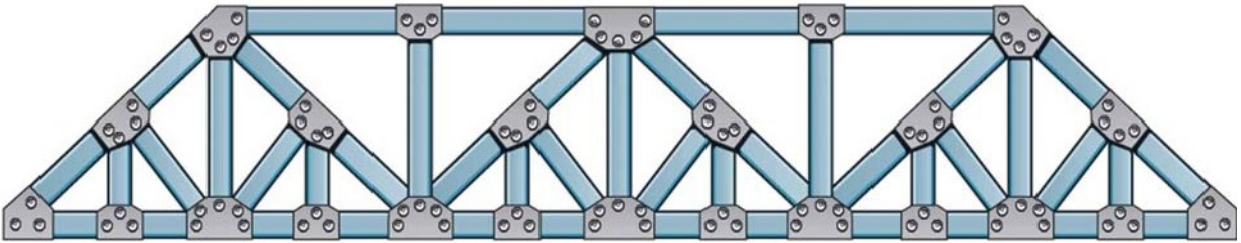
Parker



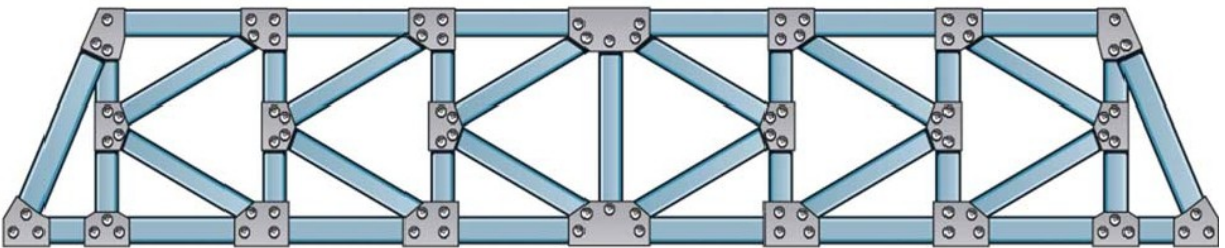
bowstring



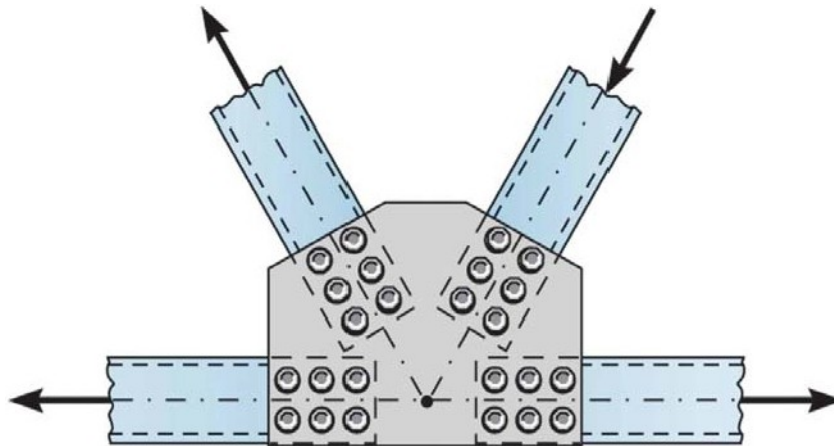
Baltimore



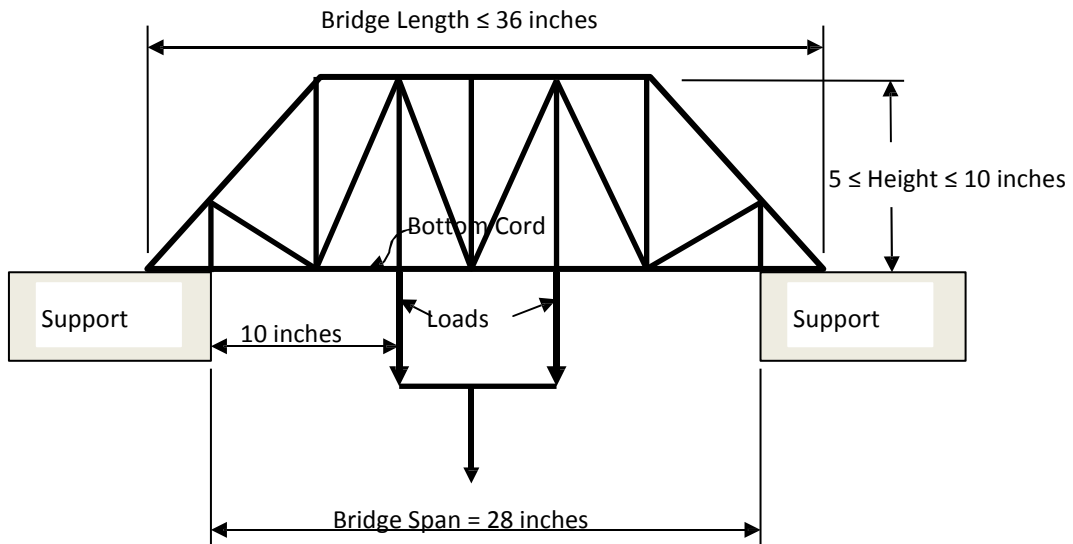
*subdivided Warren*



*K-truss*



*gusset plate*



*Adapted from and courtesy of Riyadh Hindi, PhD, PEng-Director of Billiken BEAMS at Saint Louis University.*

